



Advance Building
Construction Company

Accomplishment.Brilliance.Candour



An ISO 9001:2015 Certified Company



Table of Content

Table of Contents	2
Company Details	4
Company History	5
Founder's Message	6
Mission, Vision & Values	7
Company Overview	8
Our Core Business	9
MEP	
District Cooling	
Civil Infrastructure	
Services	10
Our People	14
Company Organizational Structure	15
Our Clients	16
Projects Portfolio	17
Policy Statement	43
Quality Policy	
Occupational Health and Safety Policy	
Environmental Policy	
Project Health & Safety Plan	45
HSE Department	
Objective	
Scope	
Management Commitment / Leadership	
Organization / Responsibilities	
Training	
Risk Management / Hazard Identification	
Operating Controls	
Occupational Health and Personal Protection	
Environmental Protection Programme	
Emergency Response Procedure	
Reporting and Investigation of Accident / Incident	
Communication & Promotion	
Evaluation & Audit	



Table of Contents

Gallery 66

Credentials..... 83



Company Details

Advance Building Construction Company

Ajman- UAE (Head Office):

2/F Office No. 206, 207, 208 Bin Hamooda Tower
(Near ADCB Traffic Signal) Ajman, Al Bustan, UAE

P.O. Box : 3151
Tel : +971 6 7451373
Fax : +971 6 7451372

Dubai-UAE :

Office M7, Al Nayieli Building, Hor Al Anz East, Abu Hail Street-Dubai UAE

P.O. Box : 341612
Tel : +971 43333614
Fax : +971 43231239

Website : www.abc-gcc.com
E-mail : info@abc-gcc.com

Management:

Mr. Fekri Al Shaikh

General Manager

Mr. Tariq Farah

Executive Manager



Company History

As a result of a believe that success is another name of “daring to dream and act”; A.B.C. was evolved in 2007 as a partnership business in United Arab Emirates. On journey of successful its completion of 10 Years, A.B.C. is committed to continue to deliver its best services to clients in the field of ***M.E.P., District Cooling, Maintenance, and Infrastructure Works.***

Growth and progressive nature embedded in the roots of the Company has then urged to expand its branches in Qatar and other Emirates to fulfill the growing demand of big projects in ***M.E.P., District Cooling, and Infrastructure Works.***

Our progressive success comes from a commitment to the client’s vision, a passion for delivering the best, and a culture of balance, integrity, leadership and loyalty.



Founder's Message

It's with great pleasure to welcome you as we introduce to you
Advance Building Construction Company.

As we celebrate 10 years of continued success since inception in early 2007; we would like to share with you the step we took towards accomplishment since the start of our business with only small capital. As we all know, construction is a very complex industry that requires great planning as it involves a lot of risk. That challenged us though to prove our strength and perseverance by delivering quality services. Needless to say, we succeeded in gaining our client's trust and had built a strong relation.

The steady increase of capital has motivated us to plan for setting up larger feasible projects which, by God's will, will effectively contribute to meet our client's needs as well as the availability of job opportunities for our society. The outcome of events had marked and proved that we had realized our dreams, accomplished our aspirations and had built a successful business structure not only for us but for our new generations who will continue this journey.

We are wishing everyone a great success in all our endeavors. Let's make history together!

Best Regards,

Fekri Al Sheikh & Tariq Farah

Founders





Mission & Vision

ADVANCE BUILDING CONSTRUCTION COMPANY'S

Commitment is to continuously improve its professional services and remain the best choice to all clients by establishing lasting relationships based on trust, transparency, and full satisfaction.

Our aim is to become one of the leading companies in GCC countries with its expertise in the field of MEP & District Cooling utilizing the experience of the distinct management team of A.B.C. Group of Companies, with its highly dedicated professionals.

Values

The desire and commitment to improve on everything we do here is of the utmost important thing to ABC. This unwavering dedication towards progression is what broadens the focus of our business and allows our Team to thoroughly examine every aspect of their performance at ABC. The main objective of ABC is the quality and the time limitation, keeping the business ethics as our prime standard, and keeping health and safety (HSEQ) as our first priority.

Advance Building Construction is committed to Health & Safety, Openness, Flexibility, Integration, Innovation, Quality, Competitiveness, Teamwork, Humility, Responsibility, and Integrity with Full Satisfaction.



Overview

A.B.C. is a dedicated progressive company, with its network in Qatar and Emirates, dealing in wide range of M.E.P., District Cooling and Infrastructure Services. We create sustainable solutions and aim to be a leader in quality, work safety and business ethics. We approach each investment carried out with great care and we respect the natural environment as well as ethical principles, since we know our work has an impact on the life of generations to come. We care about our client's satisfaction and end user's comfort.

What we do?

A.B.C. is committed to prove itself as the best decision for you to work with. The services we offer are in capacity of M.E.P. for Commercial, Industrial and Residential Building, District Cooling Plant and Civil Infrastructures.

We are proud to say that we have provided our services to many clients in big projects here in UAE, Qatar and other GCC countries. Our services are distinctive as they are continuous and we believe that we have to satisfy you with our services, no matter how small or large your project is.

Our services include:

- Engineering & Consultation
- Construction
- Procurement
- Maintenance



M.E.P.

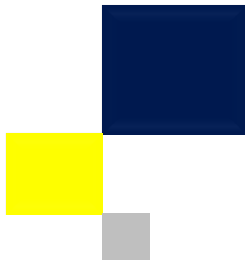
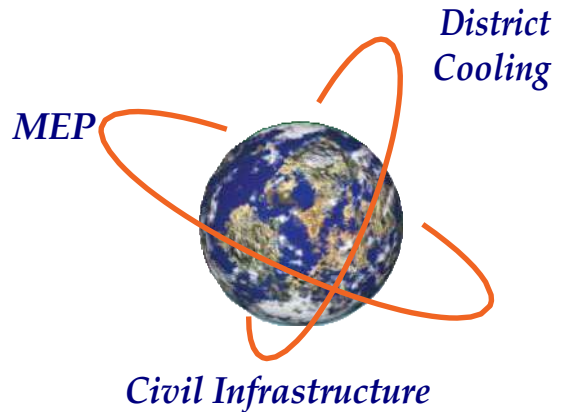
A.B.C. is a leading M.E.P. Contractor offering complete MEP contracting solutions from design, supply, installation, testing and commissioning of the MEP systems that includes Electrical, Fire Alarm, Low Current, Plumbing, Drainage, Fire Fighting, HVAC as per the requirement of the local authorities of the U.A.E, for Commercial, Residential & Industrial Buildings. The company has developed some of the best processes and technologies, saving money and assuring quality results while meeting tight schedules on the most challenging projects.

Civil Infrastructure

A.B.C. Company offers services in Civil Infrastructure for Buildings and District Cooling Plants. This has created significant value, with our ability to enhance operational efficiency adding further value to assets after their construction.

District Cooling

The demands of Cooling Systems in GCC Countries are increasing; A.B.C. Teams present full Engineering, Construction, Procurement and Maintenance for District Cooling Plants to cover these demands. In all our projects we use advanced technologies to ensure that new facilities are cost-efficient and meet or exceed environmental standards.



Engineering

The capabilities in Engineering services offered by A.B.C. includes:

1. District Cooling

EPC Works for District Cooling Network

Central /District Cooling Plants Works

ETS (Energy Transfer Station Works)

Electrical Cabling Works related to District Cooling

Control & Instrumentation Works

Civil Works associated with District Cooling (construction of valve chambers etc.)

2. Mechanical

HVAC (Heating, Ventilation & Air Conditioning). Plant & Machinery Installation.

3. Plumbing & Public Health Engineering

Fire Fighting, Fire Alarm. (www.firexuae.com).

Hot and Cold Water Supply System. Water Filtration System. Irrigation System.

Drainage and Storm Water Systems. LPG/NG Systems.

4. Electrical

Power Distribution Systems. Lighting Control.

Power Generation. Building Automation.

Low Current Systems:

- Telephone & Data Systems.
- MATV System.
- CCTV, PA, Sound Systems.
- Fire Detection & Alarm Systems.
- Control Systems.

5. Civil

Construction of Substations, Manholes, Chambers, Sewerage Pump Stations.

GRP Lining & Epoxy Coating.

Color Plaster Works.

Stamped Concrete Works.

Excavation and Back Filling for water, sewer and power lines.

Procurement

The right goods and services, at the right time, at the lowest cost. That sums up A.B.C.'s approach to procurement, plus the fact that we have the experience, the tools, and the know-how to make it work. By providing integrated, reliable, and cost-efficient supply chain management services, we help ensure the success of projects large and small. Our global capabilities include all materials and equipments required for building, district cooling plant and infrastructure projects.

Maintenance

We offer a wide range of customized and comprehensive maintenance services and contracts for complete MEP (Mechanical, Electrical & Plumbing) building services for large and medium-sized facilities.

Our capabilities include all maintenance services for M.E.P. works and equipments for commercial and industrial building and district cooling plant.

Our Engineers & Technicians are thoroughly trained in managing the performance of predictive and unscheduled tasks that prevent equipment failure.

We work closely with our clients to increase efficiency, reliability and safety and effective substantial energy savings using cost-effective O&M methods that pay for themselves over a short period of time.

Principles of our Maintenance Management

- Your asset will be properly and adequately maintained not just "repaired".
- Preventive maintenance programs are used to optimize the cost model.
- Planned maintenance, corrective maintenance & responsiveness.
- Implement a total cost of ownership or Life Cycle Program for equipment.
- Manage the operations and maintenance of your asset for less.



List of Services Offered

- Fully Integrated Facility Management.
- HVAC Maintenance.
- Electrical Maintenance.
- Plumbing Maintenance.
- Building Management Systems (BMS) Operation & Maintenance.
- Fire Safety (Sprinklers & Alarms).
- HVAC Duct Cleaning.
- Supply & Installation of HVAC System.
- HVAC Equipment Up-gradation / Replacement.
- HVAC Equipment Rental.
- Light General Repair (Civil, Painting, Carpentry, Gypsum Works).
- District Cooling Plants Operation & Maintenance.

Our Major Maintenance Packages

- Complete Facility Management (FM) including hard & soft services.
- Custom built packages (HVAC, Electrical & Plumbing).
- Operation & Maintenance of Complete MEP & Air Conditioning Services.
- Preventive / Predictive Maintenance Program and Emergency / Reactive Maintenance Program.
- 24/7 Emergency response services.
- District Cooling.

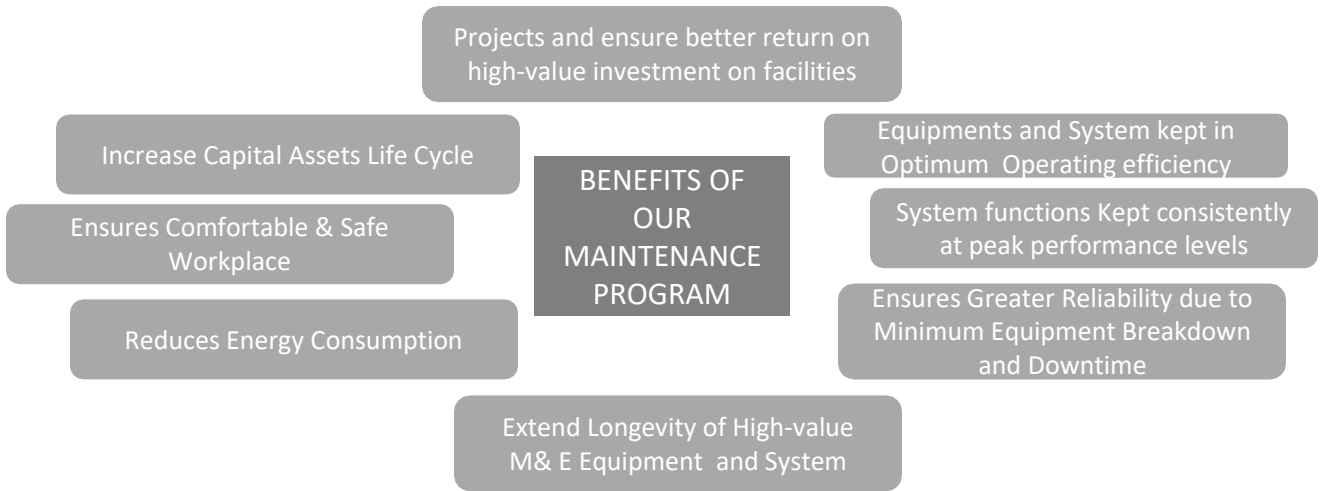
Operation & Maintenance

Our Engineers & Technicians are thoroughly trained in managing the performance of predictive and unscheduled tasks that prevent equipment failure. We work closely with our clients to increase efficiency, reliability and safety and effective substantial energy savings using cost-effective O&M methods that pay for themselves over a short period of time.

Integrated Facility Management

In collaboration with specialists, we manage ongoing facilities operations and also oversee expansion, reconfiguration or renovation. From self-performance, we cover the full range of hard and soft facilities requirements and help our clients to strategize their overall needs of facilities.

Benefits of our Maintenance Program



Over a period of time, Mechanical, Electrical, Plumbing system and equipments deteriorate. When that happens, it not only reduces the system / component performance and efficiency levels, it also results in unwanted downtime, loss of productivity and unbudgeted expenses, which can significantly affect the facility users and also damage building owner’s profitability.

By entering into Maintenance Service Agreement with us, you can get timely and reliable preventive maintenance programs which ensure that your equipment and system always deliver the optimum operation and efficiency levels.

We offer 3 ranges of maintenance packages depending on your requirements. All our packages feature our popular Handyman service as well as different levels of inspection and maintenance. All the services included in each package are listed individually.

PLATINUM PLAN
 24/7 Service
 Parts Included
 Labour Included
 Preventive Maintenance
 Brake Down Maintenance

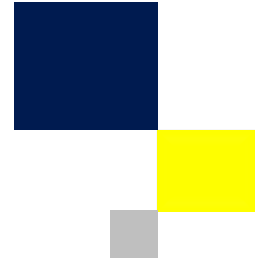
GOLDEN PLAN
 8 hrs / Day x 6 days / week.
 Labour Included.
 Preventive Maintenance.
 Brake Down Maintenance.

SILVER PLAN
 On Calls Service.
 Labour Included.
 Brake Down Maintenance.



Our People

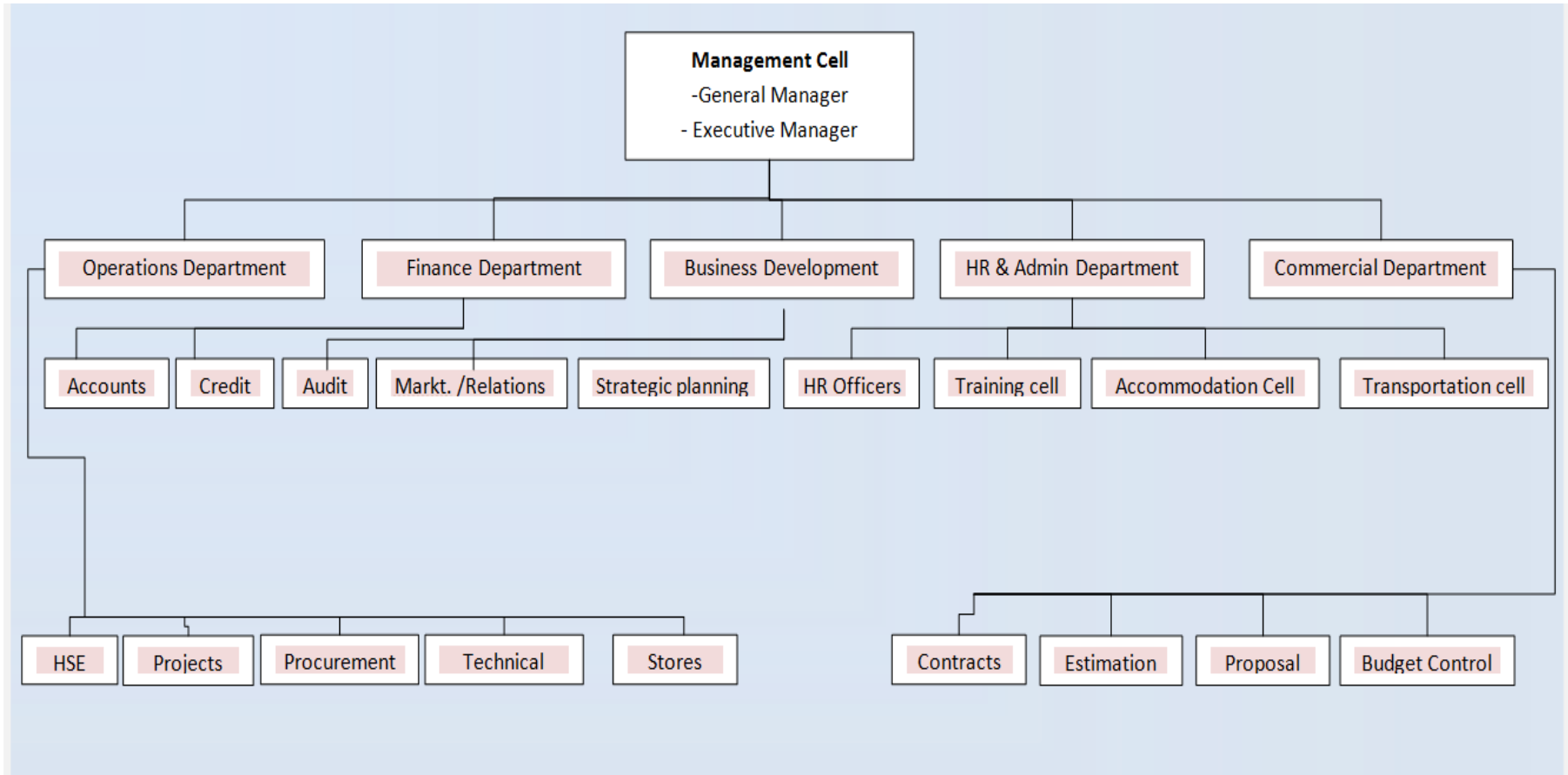
"Our workforce is our most valuable asset, the knowledge and skills they have represents the fuel that drives the engine of the business, and we can leverage the knowledge."



We recognize that our primary asset is our people, and that a truly successful company needs to be a rewarding work environment for its staff.

Our organization is structured and managed to provide ample opportunity and encouragement for our team to reach their optimum potential. We believe that mutual respect forms the base of our success.







Our Clients

"Our target is not only to deliver our services to the client, but to build a relationship of trust and confidence with them."

A.B.C. is proud to deliver its best services to many reputable clients & consultants with an everlasting trustworthy relationship such as but not limited to National Central Cooling Company PJSC (Tabreed); Laing O'Rourke; ENGINEERING CONSTRUCTION & RECONSTRUCTION CO L.L.C; Khansahib; Habtoor Leighton Group; Turner; Empower; Ministry of Education; Atkins; Bam International & BK Gulf.

Yassat Gloria



Location	: Dubai, UAE
Main Contractor/Consultant	: Ideal Concepts Contracting
Scope of Work	: HVAC Rectification Contracting
Schedule	: In Progress

Project Portfolio (On Going & Completed)

Premier Inn Hotel



Location	: Abu Dhabi, UAE
Main Contractor/Consultant	: BAM International
Scope of Work	: MEP Works
Schedule	: 2012-2013

Project Portfolio (On Going & Completed)

Plaza 1 Residences (3B+G+16FL+RF & 3B+G+10FL+RF & 3B+G+4FL+RF)



Location	: Jumeirah Village, Jebel Ali, Dubai
Main Contractor/Consultant	: CRC / National Engineering Bureau
Scope of Work	: MEP Works

Project Portfolio (On Going & Completed)

B+G+M+6 Floors Commercial /Residential Building



Location : Wadi Al Safa-3, Dubai
Main Contractor/Consultant : GEORGIA CONTRACTING/ SE & M ENGINEERING
Scope of Work : MEP Works

Project Portfolio (On Going & Completed)

Labor Accommodation B+G+4 :



Location : Jebel Ali Ind,1-Dubai

Main Contractor/Consultant : IAS Lootah Contracting / Antrium Architectural & Engineering

Scope of Work : MEP Works

Project Portfolio (On Going & Completed)

Sheikh Khalifa Specialty Hospital Additional Bunkers:



Location : Ras Al Khaima

Main Contractor/Consultant : Aswar Engineering/ Healthcare Designers & Projects Managers

Scope of Work : MEP Works

Project Portfolio (On Going & Completed)

Development of 9 Schools -Dubai- Sharjah



Location : Sharjah-Dubai, UAE
Main Contractor/Consultant : MOE/UDI
Scope of Work : MEP Works
Schedule : Completed

Motion Gate Theme Park – Dubai Parks



Location	: Dubai, UAE
Client	: Dubai Parks & Resort
Main Contractor/Consultant	: Laing O'Rourke
Scope of Work	: Supply & Installation of MEP Works

G+4 Residential Apartments & Townhouses



Location : Dubai, UAE
Client : Water View Real Estate
Main Contractor/Consultant : Mittal Construction
Scope of Work : Supply & Installation of MEP Works

Fish Farm - Dubai



Location : Jebel Ali, Dubai, UAE
Main Contractor/Consultant : Khansaheb
Scope of Work : MEP & Submarine Works

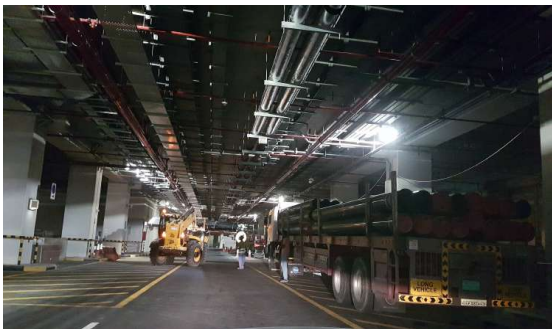
Sahara Mall Expansion



Location	: Sharjah, UAE
Main Contractor/Consultant	: khatib Al Alami
Scope of Work	: HVAC Works
Schedule	: 2010-2013

Project Portfolio (On Going & Completed)

Construction, Completion & Maintenance of 16 Nos. ETS Rooms



Location : Dubai, UAE
Main Contractor/Consultant : Empower Energy Solutions
Scope of Work : ETS works
Schedule : On Going

Duja Tower - Dubai



Location	:	Dubai, UAE
Main Contractor/Consultant	:	Tabreed
Scope of Work	:	Primary Side Underground Pipes & ETSworks
Schedule	:	On Going

Mangroves Residences - Abu Dhabi



Location : Abu Dhabi, UAE

Main Contractor/Consultant: Tabreed

Scope of Work :

External CHW Piping Network (Primary) & ETS Works
(Primary)

Marina City - Abu Dhabi



Location : Abu Dhabi, UAE
Main Contractor/Consultant : Tabreed
Scope of Work : Primary Side Underground Pipes & ETS Works

Al Noor Building

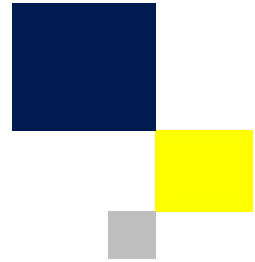


Location : Al Raha, Abu Dhabi, UAE

Main Contractor/Consultant : Tabreed

Scope of Work : Primary Side Underground Pipes & ETS Works

Project Portfolio (On Going & Completed)



ADNIC 408 - Al Raha Beach



Location : Al Raha, Abu Dhabi, UAE
Main Contractor/Consultant : Tabreed
Scope of Work : Primary Side Underground Pipes & ETSworks
Schedule : Completed



College of Media & Communications - Qatar



Location	: Doha - Qatar
Main Contractor/Consultant	: Louis Berger
Client	: BK Gulf W.L.L.
Scope of Work	: MEP Works
Schedule	: Completed

North Gate Mall- Qatar



Location	: Shamal Road –Doha / Qatar
Client	: Voltas Limited
Main Contractor/Consultant	: GHD
Scope of Work	: MEP Works
Schedule	: On Going

Project Portfolio (On Going & Completed)

Multi Used Hall



Location	: Ras Al Khaimah, UAE
Main Contractor/Consultant	: Sun Engineering/ Golden Planner Consultant
Scope of Work	: MEP Works
Schedule	: Completed

Al Nayli Tower



Location	: Sharjah, UAE
Main Contractor/Consultant	: Nayli Contracting / Innity
Scope of Work	: MEP Works
Schedule	: 2007

Hotel Bur Dubai



Location : Dubai, UAE
Main Contractor : Al Aref Construction
Scope of Work : MEP works
Schedule : 2009

Al Beeda Tower



Location	: Doha, Qatar
Main Contractor/Consultant	: PAM H&H / GHD
Scope of Work	: MEP works (47 Stories)
Schedule	: 2010

Royal Amwaj Resort Hotel and Villas



Location : Dubai, UAE
Main Contractor/Consultant : GTCC / ARICON
Scope of Work : Infrastructure Works
Schedule : Completed

Heart of Doha Project District Cooling Plants



Location : Doha, Qatar
Main Contractor/Consultant : Drake & Scull
Scope of Work : District Cooling
Schedule : Completed

Project Portfolio (On Going & Completed)

St. Regis Saadiyat Island Resort



Location : Abu Dhabi, UAE
Main Contractor/Consultant Scope of Work : AL HABTOOR & MURRY ROPERTS / ARICON
Schedule : MEP & Minor Infrastructure Works
: 2011-2012

Beach Tower Building



Location : Sharjah, UAE
Main Contractor : Sun Engineering/EMAAR
Scope of Work : MEP Works
Schedule : 2007-2008

Lake Shore Tower



Location : Dubai, UAE
Main Contractor/Consultant : Pivot Co.
Scope of Work : MEP Works
Schedule : 2008-2009

MEPTIC Tower Ajman



Location : Ajman, UAE
Main Contractor/Consultant : Canadian Consultant
Scope of Work : MEP Works
Schedule : 2009

RLCC Cooling Plant



Location : Abu Dhabi, UAE
Main Contractor/Consultant : IMCC
Scope of Work : District Cooling
Schedule : 2012-2013



Policy Statement

The prime objective of the management and employees of Advance Building Construction is to provide all the clients our best services taking in consideration the price, the quality and the time limitation. Keeping the business ethics as our prime standard, and keeping health and safety, environmental and quality (HSEQ) as first priority.

Quality Policy

As a quality conscious, **A.B.C.** shall understand and meet the aspirations of our customers. Continually improve our processes and services, looking forward to challenges which always lead us to the top. Conform to regulatory requirements and applicable local and international standards and codes. Invest in latest technology and equipments. Improve competencies of the employees and provide opportunities for growth.

A.B.C. Management and Staffs are committed to provide the highest quality services, that our technical competencies and range of products and services meet and exceed our client's expectations and needs.

Quality Assurance & Control

A.B.C. understands the value of *quality* and adheres to the effective implantation of Quality Management System and continuous improvement. Our Quality Control Personnel conducts QA/QC inspection during various stages of project construction right from technical submittals, shop drawings, Factory Inspection Test (FAT) on equipments prior to dispatch, and repeats inspection upon receiving delivery at site and prior to installation and later during the various stage of site progress until testing, commissioning and handing over:

- Develop and implement the quality plan.
- Adhere to the Quality Management System (ISO 9001:2008 Standard).
- Inspect and monitor quality of equipment & materials received at store used at site.
- Monitor quality of workmanship on site.
- Review and monitor quality of all project documentations including submittals.
- Provide corrective actions.
- Final quality checks and signs off prior to handing over our project.
- Update processes procedures and methodologies according to ISO standards.
- Conduct periodical QA audits(internal)

- Establish and maintain liaison with the certifying authority representatives.
- QC staff deployed to project sites to follow matrix reporting structure, wherein they report to the Project Manager on day-today work but report to QC Department Manager in functional matters.
- Emphasis is placed on the 'prevention' of problems rather than dependence on the detection of errors or non-conformances.
- All employees are full trained in the Quality procedures applicable to their areas of work.

Environmental Policy

As an environment conscious organization, A.B.C. shall comply with applicable environmental laws and regulations. Set internal standards and requirements, as needed.

A.B.C. is committed to:

- Caring for the environment and the prevention of pollution by applying practices and control technologies.
- As appropriate take corrective action where past practices have harmed the environment.
- Operating the business to the environmental systems requires by ISO 14001.
- Abiding by all relevant environmental legislation and applicable requirements.
- Implement "Reduce, Reuse and Recycle" awareness programmers to encourage all A.B.C. personnels to be involved in environmental management and ensuring that all employees understand and use correct methods to minimizes resource consumption and controlwaste.
- Continually improving our environmental performance by setting objective, actions and targets.
- Communicating our policy within our organization and to all concerned.
- Identifying materials, processes, products and wastes that cause or may cause pollution, and will promote and implement measures to avoid, reduce or control pollution where technically and economically viable.
- Ensure prompt actions are taken to situations endangering employees, customers, the general public and the environment as result of our activities.
- Ensure continuous improvement in our activities to prevent pollution of air, land and water.
- Everyone is responsible for the environmental aspects of the company and for reducing their impact.

Occupational Health and safety Policy

As an occupational health and safety conscious organization A.B.C. shall comply with applicable occupational health and safety laws and regulations. Set internal standards and requirements, as needed. Apply practices and control technologies that minimize risk to the extent possible. Ensure continuous improvement in its activities to prevent personal injury and property damage.



Project Health & Safety Plan

HSE Department

A.B.C. considers its employees as the most valuable assets and hence gives vital importance to their health and safety. Our Health & Safety Department has helped to evolve a strong health and safety culture within the organization driven by our goal to achieve zero accidents and zero man-hour lost. Our safety program instills in our employees the conviction that every accident is preventable and zero accidents can be accomplished only by complying with stringent health & safety procedures. On monthly basis, HSE Department identifies and awards HSE Compliance Certificate to all those key performers who are actually involved in HSE awareness and campaign.

Our safety measures are:

For the management:

- To practice accident preventive programs.
- To hire one safety officer for every sit responsible for applying safety measures independently from the operations.
- To work with client & the consultant to execute the project safety program.

For the safety officer:

- To strictly apply the company safety measures.
- To be an approved safety officer in big reputable companies authorized to sign hot & cold work conditions.
- To work with the client & the consultant to execute the project safety program.
- To conduct regular safety inductions.

For the labors:

- To wear safety helmets, dust mask, gloves and uniforms in additional to any required PPE according to job safety requirements.
- Be encouraged to report work hazards and to cooperate with their supervisor to avoid any accidents.
- To report any safety violations and misconducts that might be exercised by their colleagues.

Project Health & safety Plan

A.B.C. is committed to a policy of safe working conditions and practices, for all persons employed at sites, in full compliance with contractual, relevant local federal laws, local statutory requirements and industry standers. The company is committed to take all necessary actions to promote good health and prevent accidents, injuries, ill-health and any adverse effects on its employees, equipment and the physical environment in which its activities are carried out.

The company will care for the environment through its commitment to good environmental practices. It also aims to reduce the health, safety and environmental impacts of its activities and prevent pollution, by utilizing structured risk management approach, taking in to consideration the needs of its employees, customers, subcontractors, and the community at large.

This commitment to Health, Safety and Environment (HSE) is communicated to all employees and subcontractors by prominent display of the policy on project sites & offices, and during training.

The Chief Executive Officer has the overall responsibility for HSE management, and giving equal priority to HSE along with other business issues, and provision of adequate resources. However, it is the responsibility of all Senior Management, Engineers, Supervisors and Workforce to understand their role in implementing this policy and comply with all requirements. The management believes that effective management of health, safety and environmental issues is fundamental system through sitting of objectives and targets, periodic audits, necessary training, encouraging new ideas, employee participation, coordination with customers and subcontractors and management reviews.

Reference: OHSAS 18001 : 2007 Clause 4.2

Objective

The purpose of this HSE Plan is to provide guidance on Health, Safety and Environmental issues incorporating elements of accident prevention and take BATNEEC control measures to minimize risk, ALARP in managing Health, Safety & Environmental matters on the project. If any standard or guidance contradicts this plan, then the more stringent control will be enforced.

Scope

This HSE Plan is overall applicable for the captioned projects, and the scope of works which include Mechanical, Electrical, Plumbing and HVAC involving applicable field in engineering, fabrication & installation.



Management Commitment / Leadership

1. ABC has a strong commitment to an effective safety and accident prevention program, together with the moral and legal responsibilities of providing safe-working conditions at site.
2. The program described in this section is proactively supported by ABC Management, administered by Company's Site Supervisory Staff, facilitated by the HSE Officer and formally monitored by the ABC Safety Officers/Managers.

Organization / Responsibilities

Persons with specific HSE responsibilities are the Project Manager, Project Engineers, Supervisor/Foremen and HSE Officer/ Safety Officers. Everyone on site is expected to comply with all project HSE requirements and to ensure competence of their subordinates.

Senior Operations Manager

Senior Operations Manager shall be responsible and accountable for:

- Project safety and for working with all applicable departments, and assigned project staff to ensure that from project inception to contract completion adequate resources and top management support are provided for necessary loss prevention activities. This includes proper staffing, financial support, safe design and hazardous materials use review, and management support for necessary actions taken.
- Ensuring that the HSE policy is effective in all areas within his control.
- Ensuring that the policy is regularly appraised and reviewed and for recommending any changes.

Project Manager

Project Manager reports to the Senior Operation Manager and Construction Manager reports to Project Manager. The Project Manager/Construction Manager are directly responsible for establishing and maintaining the HSE programme in accordance with the HSE Plan. He shall be further responsible for:

- Ensuring the company's HSE policy is understood and appreciated by each employee and that each employee fully understands the HSE responsibility allocated.
- Ensure that the work is effectively planned and executed including the requirement to minimize risks to all employees and the adoption of appropriate safety standards.
- Ensuring that HSE responsibilities are clearly assigned to personnel
- Set personnel examples.



Project Engineers

Project engineers report to the Construction Manager/Project Manager and shall be responsible for the implementation of the HSE programme and shall:

- Ensure that all supervisors under their control are familiar and comply with HSE procedures and regulations.
- Be aware of Project HSE Plan and ensure that it is suitably implemented as well as propose new ideas to be incorporated for revision.
- Responsible for familiarity and compliance with client's work permit procedures.
- Ensure that the workforce is provided with and use appropriate PPES & right tools.
- Ensure that correct procedures and systems of work are being developed and maintained.
- Respond to the recommendations and liaise with the safety officer on hazard identification and the establishment of preventive measures.
- Participate in the investigation and reporting of incident/accident.
- Set personal example.

Supervisors/Foremen

Supervisors and Foremen report to the Site Engineer and shall responsible:

- Organizing the site and work places so as to ensure that work is carried out to the required, with minimum risk to men, equipment and materials.
- Ensuring that the employees under his responsibility do not engage in unsafe work practices or take undue risks.
- Response to the recommendation of Site Safety Officer/Personnel.
- Giving all employees precise instructions on their responsibilities for correct working methods.
- Maintaining good housekeeping and planning stacking & delivery of materials.
- Checking all plant, equipment and tools are maintained in good condition.
- Facilitating and ensuring use of adequate PPEs and protective clothing by employees.
- Ensuring that all persons under his control know accident / emergency reporting procedure
- Facilitating to investigate all incidents and complete incident report in conjunction with safety officer.
- Ensure that weekly tool box meetings are conducted in coordination with safety officer.
- Set personal examples.

Sr. HSE Officer/ Safety Officer

Senior HSE Officer reports to the Sr. Operations Manager at Site and HSE Manager in Head Office. Safety Officer reports to Project Manager and Senior Safety Officer.



Project Health & Safety Plan

- Responsible for the administration of the HSE program which requires a thorough knowledge of safety, fire and health regulation. The Safety Officer is qualified, by education and experience, to recommend and develop safe work procedures for situations that may not be covered by regulations.
- Establishes and maintains all safety and health record-keeping systems.
- Reports directly to the Project Manager and receives support from the ABC's HSE Manager.
- Provides safety information and guidance to line supervision on proper HSE procedures, current and potential hazards and employee training requirements. Revises the site HSE Plan to incorporate new procedures and those implemented to address new problem areas.
- Conducts project HSE inspections and reports infractions to the supervisor and the site Manager concerned and subsequently inspects to see that infractions are corrected.
- Conducts investigations of all lost-time accidents analyses and significant first aid cases, "near misses" and / or damage to property or equipment. Analyzes and completes incident investigation report and reports any serious injury to the COMPANY HSE Manager.
- Conducts the safety orientation program for new employees and subcontractors.
- Assist Project Manager in conducting regular weekly/ bi weekly Safety Committee safety meetings. Prepares minutes and circulates to supervisors on site.
- Reviews all Sub contractors safety program for compliance with ABC policies and Company's safety instructions.
- Writes monthly reports, report safety statistics and analysis, as well as actions taken to correct safety problems.
- Supervises medical facilities, medical records setup and retention, and sets up procedures and training for emergencies, including serious accidents, fire, evacuations, etc.
- Surveys project purchase orders for hazardous substances, maintains MSDSs, monitors employee exposure to toxic substances.
- Coordinates project site HSE incentive program and initials activities that stimulate and progressively maintain employee interest.
- Establishes a project fire prevention program, inspects for fire hazards and checks the fire protection equipments.

TRAINING

This section outlines most of the basic types of information and training required for site management, all employees, supervisors, and vendor representatives prior to the start of site work provided throughout the duration of the project. Comprehension of the material presented will be assured through testing where required deemed necessary for safety.

ABC will provide all required safety training for company personnel and for company's visitors to site.





Induction Training

1. New Employee Orientation

The project orientation program for employees and supervisors includes all new workers regardless of the number of years worked in the industry. It covers every person new to ABC, new to a particular project site or only new to a crew. The orientation is given before employees begin work. The orientation is tailored to the project based upon the types of potential hazards state and local laws and the company's requirements. The effectiveness of the orientation is enhanced greatly by the active participation of senior project supervision.

The orientation is presented as part of the overall project orientation given by the project staff. The information and training given includes, but is not limited to, the following:

- ABC
- Reporting of hazards.
- Types of personal protective equipments required and their usefulness.
- Project site rules of personal safety and conduct.
- Company's facility HSE rules and regulations, including smoking Policy.
- Fire prevention.
- Confined-space entry procedures.
- First aid and workers compensation procedures.
- Medical emergency information.
- Employee right-to-know law – hazardous substance.
- Employee access to medical and exposure records.
- Tool Box Safety Meetings.
- Emergency and incident reporting.
- Employee disciplinary practices.
- Employee disciplinary practices Drugs of abuse and alcohol policy.
- Work permits.

2. Supervisor's Orientation

All supervisors assigned to the project or promoted from the site work force are indoctrinated to their responsibilities. All supervisors are required to become knowledgeable and enforce all company rules applicable to their work. They shall set an example their subordinates and co-workers by their compliance with works rules and their aggressive leadership in safety. All supervisors shall know all requirements for work permits ensure no work proceeds without them or determine that a permit is not required for the work planned.

Information covered shall include the following:

- Safety responsibilities of supervisory staff.
- Safety Analysis & Task Assignment, where applicable.
- Safety motivation.
- Safe practices for specific crafts.
- Accident investigation.
- Conducting effective safety meeting.
- Employee right-to-know – hazardous substances.
- Company and governmental requirements.
- Effects of accidents.
- Drugs of abuse and alcohol awareness training.
- Techniques for job safety analysis information.
- Workplace inspection.
- Work permits.

3. Subcontractors Orientation

All subcontractors' supervisors must attend the employee orientation program which is called Supervisory Safety Training.

Safety training is considered an integral part of the HSE program and is implemented on each project.

Risk Management / Hazard Identification

The risks associated with the activities are:

- General health hazards
- Injury from moving, flying or failing objects
- Injury while handling and lifting
- Slip, trip or fall
- Exposure to hazardous chemicals, gases (as applicable)
- Fires / Explosions
- Electric Shocks
- Transportation of materials
- Suffocation / Confined spaces

Identification of hazards:

Routine inspection will be the aim of not only monitoring compliance with safety requirements but to identify potential hazards and risks associated with the given work, suitable corrective actions will be taken to either eliminate the risk involved or to effectively reduce to significantly low level.

Employee suggestions and their perceptions of risks involved will be encouraged, which would also Motivate personnel to effectively participate in the safety effort and identification of potential hazards. Such efforts by employees will be appreciated.

All work will be reviewed to incorporate the best engineering practice along with all safety measures to minimize the risks involved. Past safety performance will be reviewed and analyzed to pinpoint risks involved in similar work and take effective remedial measures.

A suitable reward scheme will be in place to reward alert employees who help avert an accident by timely identification of hazard and taking effective corrective actions.

The following preventive measure will be employed to control residual risks:

- Ensure safety procedures are in place and implemented.
- Use of safe working facilities.
- Encourage employee participation in safety initiatives (hazard identification, suggestions, better and safer method of working, etc).
- Avoid or eliminate risk at source (do things in a better way, alternate methods).
- Contain risk by protective enclosure.
- Reduce employee's exposure to risk.
- Use of personal protective equipments.
- Provision of properly lighted and ventilated workspace.
- Regular reporting and continuous improvement in the safety systems.

Operating Controls

Compliance with Rules & Procedures

Site operation will be carried out in full accordance with Safety Procedures, applicable UAE local laws And Client/ Contractor Regulations.

Routine Interactions and meetings with Client / Contractor Safety Officer will be done ensure one – to One communication and understanding of Client / Contractor Requirements. Meeting on HSE matters will be recorded by the Site Safety Officer as per Contract Requirements.

Weekly and Monthly Safety Reports will be submitted to the Client / Contractor as per Contractual Requirements. Project Specific HSE Procedures as may be required shall be developed to compliment this HSE plan.

All employees are to take reasonable care to prevent injury to him or others and to cooperate fully to enable management to fulfill their obligations.



Project Health & Safety Plan

Any employee failing to comply with the Client/Contractor rules & regulations will be subjected to disciplinary action as decided by management.

Compliance with the Client / Contractor rules and regulations will be monitored as follows during:

- Routine / planned inspections
- Safety and health inspection tours
- Audits of the system
- Accident / incident investigation

Safe Method Statements

Where the risk assessment for the project identifies an activity or operation, a specific Method Statement (MS) shall be produced by the Project Director or his authorized representative.

The Method Statements will include:

General review and approach to the works.

Identification and assessment of the associated risk.

Methods to control the risk to ALAPP level or to eliminate the risk altogether.

Work Permits

A.B.C. Permit to Work system shall apply non routine hazardous activities and work. The type of work will determine the type of Permit that is required. The site engineer concerned will be responsible for the work permit procedure and compliance.

- "HOT WORK PERMIT". Any flame or spark producing activity (welding, cutting, grinding).
- "CONFINED SPACE PERMIT". Tank entry or entry into a confined space (Work is carried out in excavation deeper than 1.2m, tanks, vessels, pipes, etc.).
- "CLOSE PROXIMITY PERMIT". When work is within 15m. Of an overhead power line or process lines..
- "COLD WORK PERMIT". When non-hazardous work is conducted in existing Plant area (crane, boom lift, scissor lift-etc.)
- "ELETRICAL WORK PERMIT". When on any live electrical system including Isolation Certificate (temporary or permanent) etc.

Reference : OHSAS I8001I:2007 Clause 4.46



Occupation Health and Personal Protection

Personnel Protective Equipment (PPE)

Personnel protection is essential to reduce human exposure to potential hazards associated with work, which cannot be practicably controlled at source.

All ABC employees will wear the correct “personnel protective equipment” – PPEs, all times. PPE include hard hats (helmets), safety shoes, safety goggles and dust masks where required.

Worn out or defective PPE will be replaced immediately. Personnel who willfully disregarded these regulations, or tamper with PPE to reduce its effectiveness will be subjected to disciplinary action.

Immediate supervisor and or Safety Officer will instruct their personnel in the correct application of PPE issued to them and will ensure that they are being used.

The safety department will conduct training in the use and fitting of PPE. The Safety will keep training records as well as control in coordination with the store Keeper.

Enclosed PPE issue Form

The safety Officer /Project Manager will ensure that stock of standard PPE items and other safety equipment are ordered on time and in the with the minimum / maximum levels set for each item. Procedure HSPR 010 Rev. I Dated 0 1st January 2011

Medical service / First Aid

All employees have been medically tested and certified fit for work.

First Aid Kits are available on sites to take care of minor injuries – cuts and bruises.

Safety Officers are all basically trained as first-aiders and other foremen who are able to administer first aid will be identified and known to workmen.

Occupational health hazards will be identified during audits and inspections. Where a specific health hazard is identified a survey will be performed by the safety department to assess the extent of the hazard. The subsequent survey report will indicate the measures necessary for substitution, elimination, dilution of the hazard and if required, the P.P.E. necessary to minimize employee exposure.

Hazardous Material Communications

The site HSE Officer has the overall responsibility for administering the project hazard communication program. A list of all hazardous chemicals that are used on the project site (s) will be compiled by the site HSE Officer. A listing of all the Material Safety Data Sheet (MSDS) received from vendors during the engineering requisitioning phase of the project should have been previously assembled by the project engineer.



Project Health & Safety Plan

The list is updated as necessary copy of MSDS received by the site material warehouse / receiving department attached to goods received will be handed the site HSE Officer. The official list, together with MSDS received with goods, is kept in the department and the first aid station.

If work is being conducted in or near facilities that are in operation or contain operating chemicals, the company / operator must provide a listing and copy of MSDS for all hazardous chemicals in the facilities. Container labels, MSDS and training on handling materials are provided as required by law.

These provisions may include the following:

- (1) Container labels list the contents of the container and appropriate hazard warnings. Secondary containers are labeled with either an extra copy of the manufacturer's label, or with a sign or generic label that lists the container's contents and appropriate hazard warnings. This responsibility is assigned to the warehouse / receiving department and monitored by the site Safety Officer.
- (2) Copies of material safety data sheets for all hazardous chemicals to which project personnel may be exposed are kept by the site Safety Officer and are readily accessible to employees in the work area during each work shift.
- (3) Supervisors are responsible for ensuring that employees are informed of the hazards of working with hazardous materials routinely.

Site facilities

ABC will provide employees on site with adequate supplies of drinking water, adequate and suitable toilet facilities, suitable washing facilities, smoking areas, and mess room facilities subject to any arrangements made for sharing any contractor / client facilities that are available.

Environmental Protection Programme

General

ABC is committed to always minimize the adverse impact of its operations on the environment by ensuring that appropriate environmental protection controls are taken.

The Site Safety Officer and Project Manager will ensure that the impact of their operations on the environment are assessed and minimized and that adequate arrangements are in place to deal with potential environment pollution as applicable and agreed in the Contract conditions.

All projects performed on client / Contractor installations will conform to the environmental standards laid down by all Client / Contractor. Each supervisor and foreman will hold on a regular basis a toolbox talk with his workforce to communicate the task instructions to the employees.



Waste Management

All waste will be identified, segregated, handled and disposed at locations approved by the client / contractor and the relevant authorities and in accordance with the prevalent waste management procedure of client / contractor. Site Management will enhance awareness amongst personnel to minimize generation of waste on site and subsequent handling.

Housekeeping / Tidiness

ABC firmly believes that a well-kept site promotes safety by minimizing hazards associated with an untidy site housekeeping and segregating waste on a continuous basis would help minimize impact of works on the environment. Cleanliness and orderliness will also ensure a more conducive and safer environment for working. Paramount importance will be given to site housekeeping and tidiness. Housekeeping within all work areas will be ensured by each supervisor. Sites will be kept neat and tidy on a continuous basis to be monitored by Safety Officer during his daily rounds.

Emergency Response Procedures

General

This section provides general guidance for handling emergency situations on the project site. Specific client / contractor emergency procedure of this contract will be implemented and will take precedence over this section. It is the responsibility of the site management team to review and ensure awareness of emergency procedures among all the site personnel. It is also the responsibility of the all employees to continually familiarize themselves with the assembly procedures for their relevant areas of work.

The management is committed to the principle of safe working and desires that, on no account, should any person ever put himself to risk.

Fire Prevention

In any case, fire has to be prevented rather than fought, and therefore, we will concentrate on tidiness of site; smoking is prohibited on sites and in camps. Key personnel will be trained in fire-fighting.

Firefighting:- in case of a fire, after the alarm has been sounded, all efforts will be made to put off the fire by the proper use of fire extinguishers, fire hydrants, hoses, etc. until more professional help comes by fire extinguishers will be available on site at strategic locations.

Emergency Response Procedures

We shall complying with the emergency procedures of contractor/ client, as applicable.

Emergency procedures shall be included as part of the training of each employee on the project site. They will be periodically reinforced through meetings. Any emergency shall be immediately reported to the supervisor concerned and to the site safety officer. They shall report to the contractor/client site safety and to the project manager.



Reporting and Investigation of Accident /Incident

The objective is to reduce the frequency of accidents by applying the knowledge learnt from effective investigation, reporting and analysis of past accidents data. On being informed of or witnessing an Accident/Incident, the concerned Supervisor/Foreman will be given priority for first aid and medical care. The Project Manager / Site Safety Officer / Construction Manager will be informed immediately. All accidents are to be immediately orally to Client / Constructor and a written report to be submitted, as appropriate. Reports made will contain factual evidence and statements. Misrepresentation of facts is regarded as a serious breach of Client / Contractor rules and regulations. All accidents/incidents will be reported to Client / Contractor as per the Accident / Incident Reporting Procedure.

The Safety Officer will investigate any serious accident and if necessary prepare a separate report. The following formula will calculate statistical safety performance.

Frequency rate = No. of LTA* X 10,000

Total Man-hours Worked

*Where LTA = Lost Time Accidents

Communication & Promotion

Clear and proper communication through all levels on site is essential to promote HSE awareness and implementation by either verbal or written communications or by visual media like posters.

Personnel Communications

Personnel communications are the one to one exchange of information between people and are absolutely essential to enhance individual performance through personnel communication between supervisors and their staff.

Task Briefing

The Site Engineer is responsible for ensuring that proper instructions on how to do each new or differing job are given to employees in his area of responsibility, prior to commencement of the job.

Specific precautions for a given activity are mentioned during the weekly tool box meetings.

Tool Box Safety Meeting

Tool Box Meeting is conducted on a weekly basis with all craft personnel. These meetings are conducted by Foremen or general foremen utilizing material prepared in coordination with the site Safety. Craft foremen and superintendents attend these meetings and actively participate and support safety. The Tool Box Meetings are utilized as primary channels of two-way communication between ABC and employees regarding project safety.

On a weekly basis, the site Sr. HSE Officer issues subjects for discussion. A record of each Tool Box Safety Meeting is kept and retained in the project site safety files to show the subjects discussed along with an attendance sheet with signatures.

Group Meetings

The group meetings further ensure that safety, health and environment topics are discussing during Management, Department and Site Meetings. Accidents and near missed accidents and near missed incidents and the subsequent corrective and preventive action taken, the Project Manager and / or the Safety Officer / Safety Engineer will conduct group meetings every month.

HSE Motivation / Monthly Safety Awards

The Site Engineer along with Safety Officer will assess and nominate the Safety Man of the Month. This award scheme is used to motivate people to work safety every time. A certificate of commendation will be given as agreed by management.

Evaluation & Audit

Hazard and loss potentials will be identified by conducting a program of planned inspections and to reaffirm adequacy and effectiveness of planned HSE system for the project.

Planned General Safety Inspections

Planned General Safety inspection will be performed by the Site Safety Officer / Safety Inspectors. The inspection will check for hazards and unsafe practices or conditions. Any safety hazards which could not be corrected at the time of the inspection will be notified to the Project Manager / Site Engineer for further action.

Inspection tours

Inspection tours are conducted by the Senior Management, HSE Management Representative, the Project Manager, and the Site Safety Officer as indicated below.

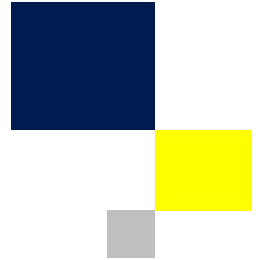
	Inspection By
Daily Inspection	Supervisor & Safety Office
General Inspection	Safety Officer
Inspection Tours	Senior Management / HSE Representative Project Manager Safety Officer

HSE System Reviews

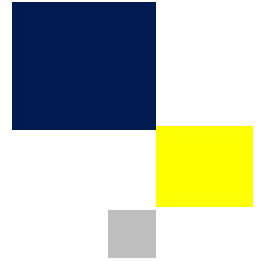
ABC management will review the HSE Management System once a year to ensure the planned system is effective and is being complied with. The HSE procedures, relevant to site operation will be reviewed by the Senior Safety Officer as and when necessary, but not less than once a year.

Reference: OHSAS 18001 : 2007 Clause 4.5.2

Projects Gallery



Projects Gallery



Projects Gallery



Projects Gallery



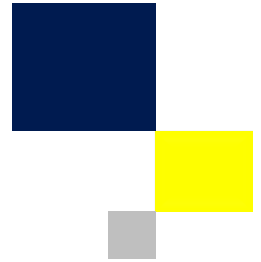
Projects Gallery



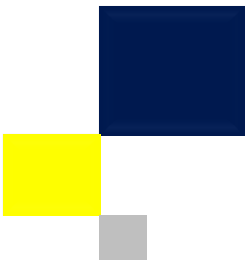
Projects Gallery



Projects Gallery



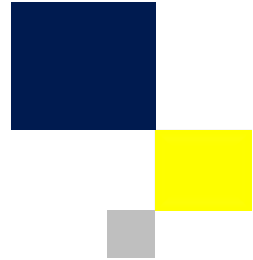
Projects Gallery



Projects Gallery



Projects Gallery



Projects Gallery



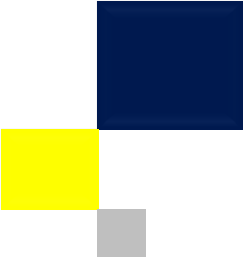
Projects Gallery



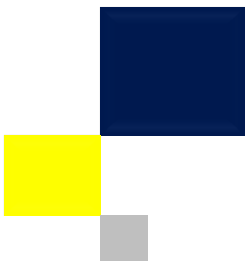
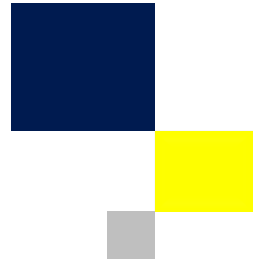
Projects Gallery



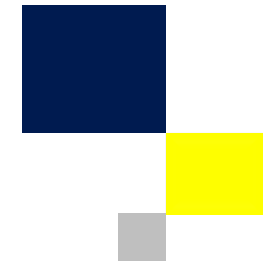
Projects Gallery



Projects Gallery



Projects Gallery





TCCPL

Certificate of Registration

This is to certify that

Advance Building Const. Co. L.L.C

P.O. Box No. 3151, Ajman, United Arab Emirates

has been assessed and registered by TCCPL as conforming to the requirements of:

ISO 9001:2015 [Quality Management System]

The Quality Management System is applicable to:

Providing All Kind of Building Projects Contracting, Electromechanical Equipment Installation and Maintenance Service for District Cooling, Electrical Fitting Contracting

Certificate No. : Q-9711801197 | Certificate issue date: 18-01-2018 | Certificate valid till : 17-01-2021
1st Surveillance due before : 17-01-2019 | 2nd Surveillance due before : 17-01-2020

Managing Director



Accredited by **United Accreditation Foundation (UAF)** Full Member of IAF
3510, Colmar, Norfolk, VA 23509, United States of America (USA)
To check certification status: <http://uafaccreditation.org>

Trans Continental Certifications Pvt. Ltd.
www.tccplcertifications.com

To check certification status: <http://uafaccreditation.org>, www.tccplcertifications.com or write us at info@tccplcertifications.com
Certificate is the Property of TCCPL and shall be returned immediately when demanded

CERTIFICATE - CERTIFICAT - ZERTIFIKAT - CERTIFICATO

This is to Certify

that

*Advance Building
Construction Company
L.L.C.*

Is a member of

The Building Services Research &
Information Association

Valid until: 31st December 2019

Membership number: CON3128

Signed: *Joshua Evans*

Chief Executive



Improving the built
environment



Delivering
knowledge



Measuring compliance
and performance



International



Advance Building Construction Company

UAE : Ajman (Head Office)
P.O.Box 3151, Ajman, United Arab Emirates
Tel: + 97167451373
Fax: + 97167451372
E-mail: info@abc-gcc.com

UAE : Dubai (Branch Office)
P.O.Box 341612, Dubai, United Arab Emirates
Tel: + 97143333614
Fax: + 97143231239
E-mail: info@abc-gcc.com

www.abc-gcc.com